

# **XL-DP100 PAPER CUP MACHINE (for 3-9oz)**



## **FOBningbo price:**

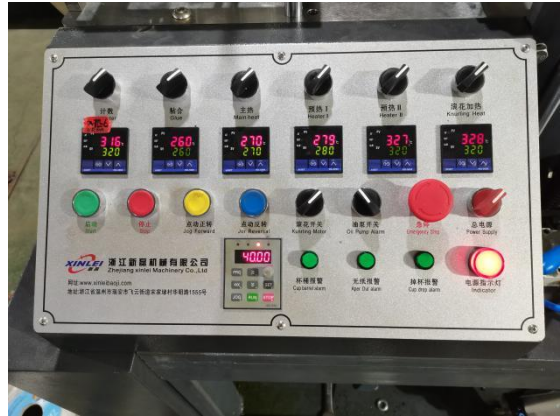
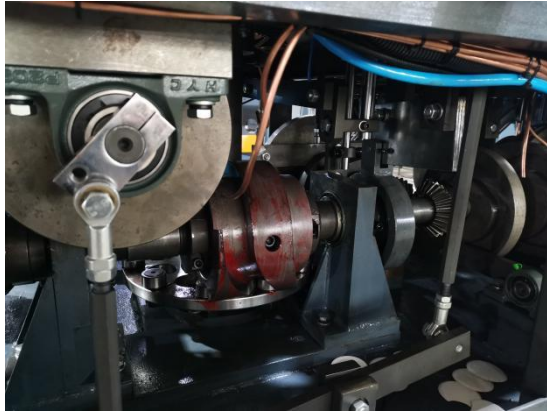
6500usd with heater

8500usd with ultrasonic+collection

10500usd with ultrasonic+collection+plc+touch screen

机器与产品图片  
Machine and product pictures

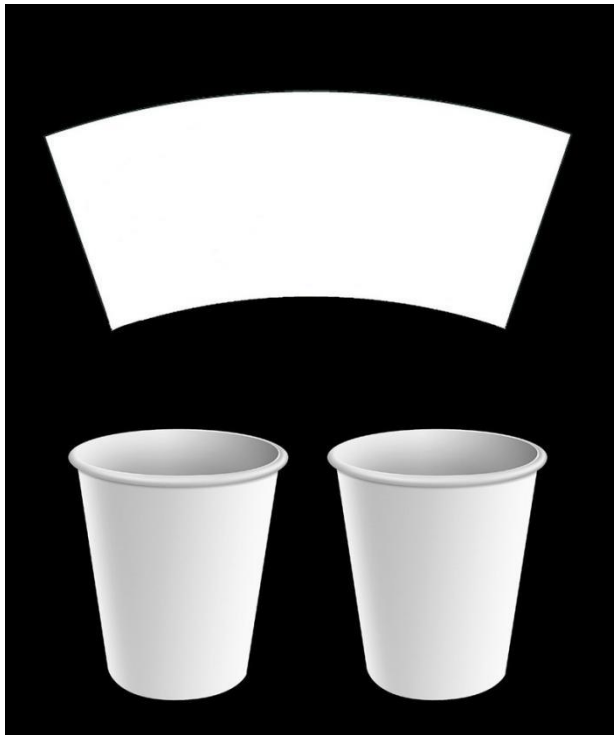
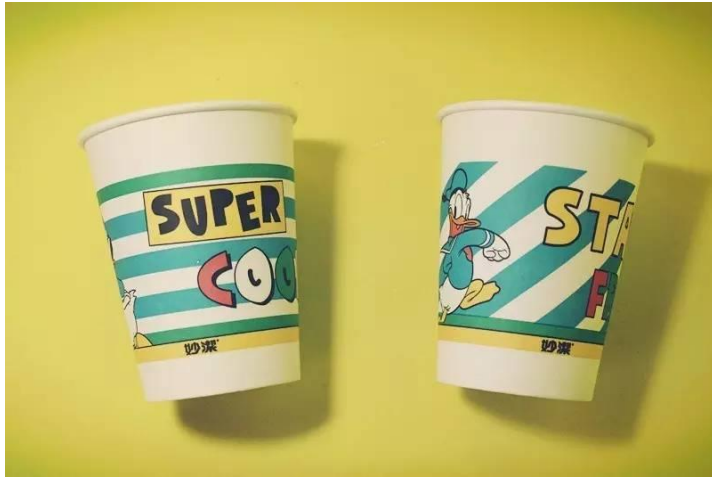




**REMARK:** Full mold 1000usd, half mold 500usd,



样品图片 Sample pictures:



### 优势 Advantages:

本厂纸杯机工作原理是由一个主电机带动整体机器进行工作，实现了齿轮和凸轮结构的完美融合。现在机器采用单个铝盘代替以前的三盘机器，使机器故障率大幅度减少，对操作人员的训练时间减少。本机有 10 工位，10 工位磨具，折抵滚花预热 5 组工位。机器运行速度提升至 90-120 可根据客户要求定做 3-16oz 单双淋膜的纸杯。是一款全自动的纸杯成型设备,通过多分排自动送纸、纸张防退装置(保证定位准确)、超声波或铜条焊接、机械手纸筒转移、注油、冲底、折底、预热、滚花、卸杯等连续工序，可稳定生产各种不同规格纸杯，是我公司自主研发的经过全面技术改进提高整机稳定性能的纸杯设备。The working principle of our paper cup machine is that a main motor drives the whole machine to work, and realizes the perfect fusion of gear and cam structure. Now the machine uses a single aluminum disk instead of the previous three-disk machine, so that the machine failure rate is greatly reduced, and the training time for the operator is reduced. This machine has 10 stations, 10 stations grinding tools, fold against

the flower preheating 5 groups of stations. The machine running speed is increased to 90-120 can be customized to 3-16oz single and double shower film paper cups according to the customer request. Is a fully automatic paper cup molding equipment, through multiple automatic paper, paper return device (ensure accurate positioning), ultrasonic or copper welding, mechanical paper cylinder transfer, oil injection, bottom, folding, preheating, rolling, cup, unloading continuous process, can stable production of different specifications of paper cup, is our company independent research and development after comprehensive technical improvement can improve the stability of the paper cup equipment.

**技术参数 technical parameters:**

|  |                                    |
|--|------------------------------------|
| 机器型号 Model                                 | <b>XL-DP100</b>                    |
| 产量 Production speed                        | 90-110 个分钟<br>90-110 pcs/min       |
| 电压 Voltage                                 | 380V/50hz 3 phase                  |
| 机器主机尺寸 Machine package size                | 2100x1050x1600mm (长*宽*高 L*W*H)     |
| 材料要求 material requirements                 | Single /double pe paper            |
| 功率 Power                                   | 5kw                                |
| 机器重量 Weight                                | 1500kgs                            |
| 对应纸杯尺寸 Corresponding to the paper cup size | <b>3-9oz</b>                       |
| 速度 speed                                   | 90-110pcs/min                      |
| 纸张厚度要求 Paper thickness requirements        | 150-350gsm                         |
| 供气要求 Gas supply requirements               | 0.6-0.8mpa; 0.4m <sup>3</sup> /min |
| 机器收杯架包装尺寸 Machine size of machine machine  | 900x600x1800mm (长*宽*高 L*W*H)       |
| 杯身粘合方式 The cup body sticks in              | Ultrasonic/heater                  |

配置单(低配) specification(Low match):

| 序列号<br>NO | 主配置清单 Main<br>configuration list    | 机器品牌<br>Machine<br>brand | 产地 place of<br>production | 可选<br>selectable                    |
|-----------|-------------------------------------|--------------------------|---------------------------|-------------------------------------|
| 1         | 主电机 main motor                      | 飞 强<br>feiqiang          | 浙江 zhejiang               | o                                   |
| 2         | 滚花电机 bottom<br>knurling motor       | 飞 强<br>feiqiang          | 浙江 zhejiang               | o                                   |
| 3         | 润 滑 电 机 oil<br>lubrication motor    | 正 茂<br>zhengmao          | 深圳 shenzhen               | o                                   |
| 4         | 总电源 total power                     | 正泰 chnt                  | 浙江 zhejiang               | 施 耐 德<br>schneider                  |
| 5         | 变频器 Inverter                        | 科沃 kewo                  | 中国 china                  | 台达/日本三<br>菱<br>delta/mitsubi<br>shi |
| 6         | 交 流 接 触 器 AC<br>contactor           | 正泰 chnt                  | 中国 china                  | 施 耐 德<br>schneider                  |
| 7         | 三 相 保 护 器 three-<br>phase protector | 德力西 delixi               | 中国 china                  | o                                   |
| 8         | 传动器 Actuator                        | 台 中<br>taizhong          | 浙江 zhejiang               | o                                   |
| 9         | 按钮开关 bottom                         | 施 耐 德<br>schneider       | 法国 france                 | o                                   |
| 10        | 温度模块 temptreture<br>mode            | 奥托尼克斯<br>Autonics        | 韩国 korea                  | o                                   |
| 11        | 气动元件 Pneumatic<br>Components        | pneulead                 | 上海 shanghai               | 日本亚德客<br>airtack                    |
| 12        | 计数器 counter                         | 欣灵 xinling               |                           |                                     |
| 13        | 温 控 tempreture<br>controller        | 亚泰 yatai                 |                           |                                     |
| 14        | 开关电源 switching<br>power supply      | 明 伟<br>mingwei           |                           |                                     |
| 15        | 断路器 breaker                         | 正泰 chnt                  |                           |                                     |
| 16        | 光 电 开 关<br>Photoelectric switch     | 泰武 taiwu                 |                           |                                     |
| 17        | 行 程 开 关 stroke<br>switch            | 奇 胜<br>qisheng           |                           |                                     |
| 18        | 继电器 relay                           | 德力西 delixi               |                           |                                     |
| 19        | 蜂鸣器 buzzer                          | /                        |                           |                                     |

|    |                       |   |  |  |
|----|-----------------------|---|--|--|
| 20 | 热 电 偶<br>Thermocouple | / |  |  |
| 21 | 指示灯 light             | / |  |  |
|    |                       |   |  |  |